



**HIKVISION®**

FOR A WORLD OF APPLICATIONS,  
TODAY AND TOMORROW.

**SUCCESS STORIES**

[www.hikvision.com](http://www.hikvision.com)

# ABOUT HIKVISION

Hikvision is the world's leading supplier of video surveillance products and solutions. Featuring the industry's strongest R&D workforce, Hikvision uses its state-of-the-art manufacturing facilities to design and develop innovative CCTV and video surveillance products. The company's complete product suite includes Smart IP cameras, HD analog cameras, speed domes, NVRs, DVRs, video management software, access control and alarm systems, encoders, decoders, and other elements of sophisticated security systems. Hikvision products serve a diverse set of vertical markets that includes retail, banking and finance, transportation, education, commercial, government, and residential applications.

Since its inception in 2001, Hikvision has played an active role in video surveillance market, devoting 8% of its annual revenue to research and development for continued product innovation. Hikvision, which is publicly listed on the Shenzhen Stock Exchange, has a truly global presence with regional offices in 21 locations around the world.

**HIKVISION**

GREAT PRODUCTS  
GREAT PARTNERS



# CORE TECHNOLOGIES



Audio & Video Storage  
Technology



Video Analysis  
& Pattern Recognition  
Technology



Application-specific  
integrated circuit(ASIC)  
technology



Cloud Computing



Audio & Video Codec  
Technology



Embedded system  
development technology



Big Data Analysis  
Technology



Video Image Processing  
Technology



Streaming media network  
& control technology

SUCCESS STORIES

# ADDRESS SECURITY ACROSS VERTICALS



RETAIL



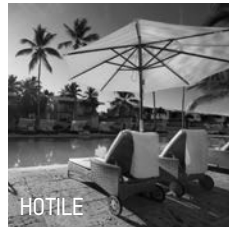
BANKING



EDUCATION



CITY



HOTEL



TRANSPORTATION



CRITICAL  
INFRASTRUCTURE



INDUSTRIAL  
COMMERCIAL



MORE







The Smart Retail Solution from Hikvision is a surveillance package that effectively enhances much more than just security - it adds economic efficiency and productivity as well.

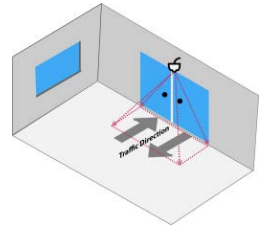
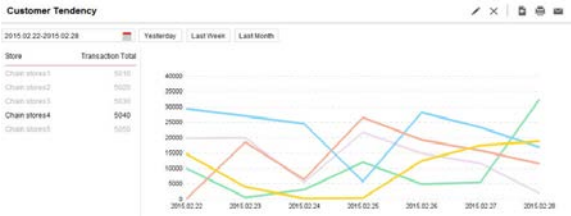




# Highlights

## ■ People Counting

Customer traffic flow and retail shopping trends are very helpful analytics for businesses when advertising promotional campaigns and evaluating marketing strategy. With built-in customer-counting algorithms, Hikvision IDS Camera automatically records foot traffic and charts customer shopping patterns.



## ■ Fisheye Camera

One Fisheye camera alone allows any angle of coverage for in-store areas, providing panoramic monitoring while capturing every detail of a large shopping area.



Fisheye



Fisheye+3 PTZ views



4 PTZ views



Horizontal Panoramic View



Panoramic+3 PTZ views

- Reduces storage and bandwidth
- Multi-view mode
- Provides SDK to third-parties



# Al Fitaihi Group, Saudi Arabia

## PROJECT BACKGROUND

The Al Fitaihi Holding Group is the largest distributor of luxury goods in Saudi Arabia. Al Fitaihi's premier store is located on Madina Road at the heart of Jeddah's city center and features a variety of specialty goods—cosmetic and beauty products, ornaments, household decorations, clothing and textiles. It is also home to the company's most exquisite high-value jewelry boutique this fact alone places a heavy responsibility on its CCTV security system.

## CHALLENGES

The CCTV cameras needed to be as unobtrusive as possible, complementing the existing, prestigious décor, and must be installed with as little disruption as possible. Other major project objectives included an assurance of very stable performance for the cameras and the NVRs, high resolution video streaming and recording of the cameras monitoring the cashier, and the capacity to further expand and augment the system over time.

## HIKVISION PRODUCTS ADOPTED

Hikvision 3MP Discreet IP Cameras and 32-channel, high-capacity NVRs



## SOLUTION

Hikvision cameras used in-ceiling mounts to minimize their impact on the distinguished interior design. The cameras provide a 2048 x 1536 maximum resolution for true night-time operation, and they support dual, full HD 1080p real-time video streams. This setup allows continuous, high-resolution monitoring of the cashiers desks, essential for the security team to prevent the mishandling of cash and other monetary transactions.

## CUSTOMER TESTIMONIAL

"This first collaboration between the Al Fitaihi Group, Okaz International and Hikvision has been a great success. A large factor in this is the very high quality of the Hikvision products and it is fitting that some of the Kingdom's most valuable jewelry is being watched over and protected by some of the world's most advanced technology."

- Mohan, Okaz International



# MORE SMART RETAIL SUCCESS STORIES



01 Oechsle Department Stores, Peru

04 Denmark's House of Amber

02 Ti amo Italian Restaurant, Russia

05 Ramez Hyper Market, Bahrain

03 DM Drugstores, Germany

06 Magyar Telekom, Hungary





07 Rawda & Coop Society Supermarket, Kuwait

09 Makro distribution center, South Africa

08 Kiwi Mini Pris supermarkets, Denmark

10 Suhail Bahwan Automobiles, Oman





SUCCESS STORIES

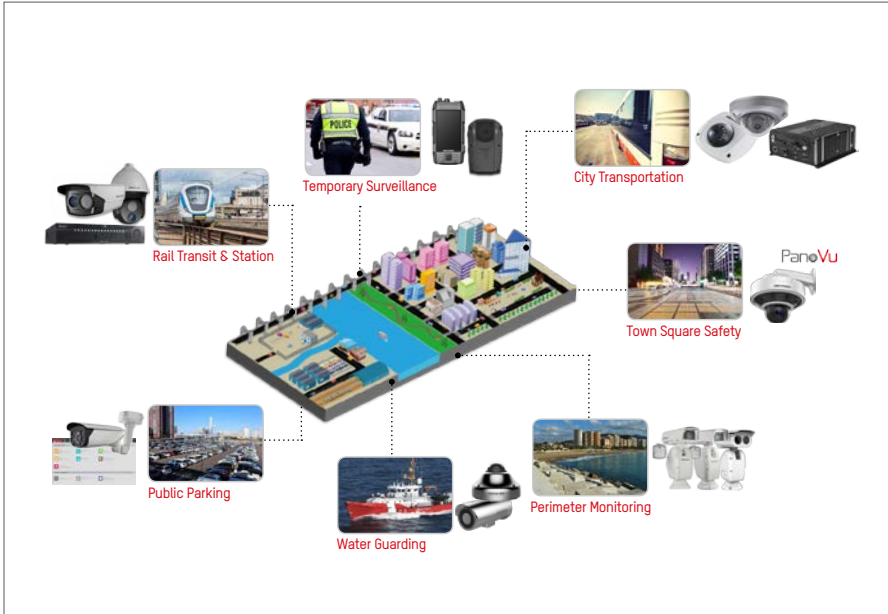
CITY







Hikvision's Smart City Solution carries everything your smart city will need - whether you are developing Smart City systems for government services, transportation and traffic management, energy plants, health care, water and waste systems, or any combinations of these.



## Highlights

### ■ Panovu Cameras

Hikvision Panovu cameras are designed for monitoring very large areas and detecting suspicious targets, even in dim light conditions, such as town squares and city parks which are often filled with people day and night. The PanoVu Cameras with four or eight Darkfighter imagers provide 16 MP or 8 MP panoramic view, and a 23x 2 MP PTZ camera for detailed image capturing.







# Philadelphia Recreation Centers, USA

## PROJECT BACKGROUND

With over 600 facilities serving thousands of people each year, the Department of Parks and Recreation worked closely with City of Philadelphia Engineer Pedro Pinto to develop high-standard CCTV design criteria.

## CHALLENGES

One primary concern was finding a foundational system that could extend as infrastructure was gradually upgraded throughout the city.

## HIKVISION PRODUCTS ADOPTED

Hikvision's 3MP Outdoor Network Camera and video management software



## SOLUTION

Hikvision's Video Management Systems was incorporated to communicate between rec centers and with systems made by other manufacturers- providing a scalable video management system with abundant features.

## CUSTOMER TESTIMONIAL

"Where we were faced with vandalism, loitering, and burglaries before, the numbers decreased immediately once we outfitted our facilities with cameras. We don't just want a "fun, safe, Philly summer"; we want a "fun, safe, Philly." With the introduction of Hikvision video surveillance equipment, not only are we covering our sites, we can tell what's going on in the streets and coordinate with the police department if need be."

- Susan Slawson, Deputy Commissioner of Parks and Recreation





# London Borough of Hammersmith and Fulham, UK

## PROJECT BACKGROUND

The London Borough of Hammersmith and Fulham in West London has the largest "town center" CCTV scheme in the entire country. This Hammersmith Town Hall project represents a blending of public and commercial CCTV systems that ultimately compose a very large and thorough CCTV system; one that covers public space areas and public space partners to represent the entire civic community.



## CHALLENGES

The Borough's current CCTV system is the culmination of gradual improvement. Roughly 10 years ago, Hammersmith and Fulham began switching out existing VCR units to new DVR models. However, the council's first attempt did not yield long-term success. A brief two years after the initial DVR units were installed, a change was necessary.

## HIKVISION PRODUCTS ADOPTED

Hikvision's Standalone DVR and Video Management Software



## SOLUTION

Hikvision's standalone DVR features such as 4CIF resolution, real-time recording and excellent HD storage capacity were integral towards the overall success of this project, while the Hikvision iVMS-4200 works as a common platform for the DVRs and other hardware. The whole system connects the police department, managers, and other administrators to the overall network.

## CUSTOMER TESTIMONIAL

"Initially, the council in charge of this transition chose a different manufacturer. Simply put, That manufacturer was not as dependable and the support was not there. As such, Hikvision was chosen because it represents a robust DVR manufacturer that supplies a networked DVR solution capable of recording all of the councils existing CCTV cameras as well as providing 100% expansion capacity."

- John Baldwin, Chroma Vision Limited





# New York Public Housing Facilities, USA

## PROJECT BACKGROUND

When Omni New York purchased the River Park complex in the Bronx in 2012, the purchase was the largest in New York's subsidized housing history. The goal of the CCTV installation was to dramatically increase the quality of life for River Park's more than 4,000 residents by renovating the development's 1,654 units and drastically reducing the amount of unwanted or unlawful activity. A comprehensive security solution, including an on-site security team and thousands of video cameras, was needed.

## CHALLENGES

In designing the system, only a solution that would be easy to install and operate would work one that offered a user-friendly VMS that could be easily accessed by multiple users from a variety of locations.

## HIKVISION PRODUCTS ADOPTED

Hikvision's custom-tailored iVMS-5000 Integral Monitoring Management System Software



## SOLUTION

Hikvision's Video Management Systems ties the whole solution together. This software allows the security staff to manage all of the new cameras, as well as the original, pre-installed models. This platform remotely links to the New York City Police Department, so they are aware of the situation before they arrive onsite when any crisis arises.

## CUSTOMER TESTIMONIAL

"Hikvision's state of the art technology gives us the ability to monitor thousands of real-time video feeds and link directly to law enforcement during any incident to immediately respond to the concerns of our tenants."

- Abolos, Reliant Safety



# MORE SMART CITY SUCCESS STORIES



01 The Republic of South Korea | 02 Memphis Police Department, USA

03 Belo Horizonte, Brazil





04 Foz do Iguaçu, Brazil

05 Buenos Aires, Argentina



SUCCESS STORIES

# TRANSPORTATION









Supervising driver's behavior



Monitoring entrance with intrusion detection



Viewing vehicle passengers from different angles

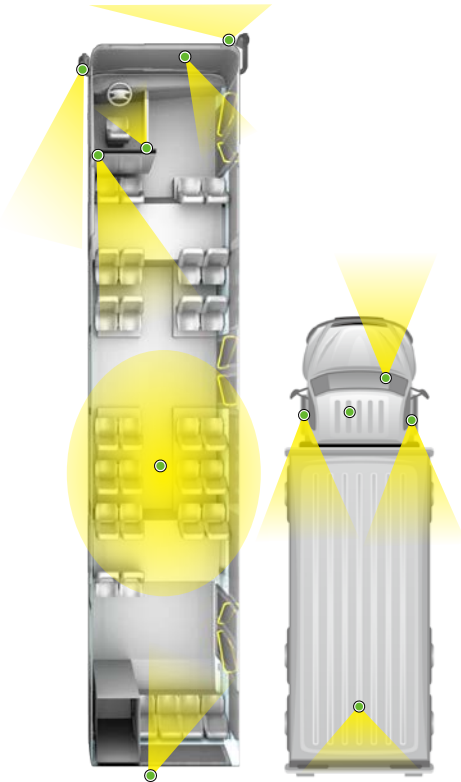


Monitoring traffic outside of the vehicle



Dedicated fisheye camera and on-board recorder with LCD monitor offer side view to prevent dead-angle on backing a vehicle.

Hikvision's Smart Mobile Transportation Solution provides powerful, comprehensive surveillance for every vehicular security need. High-definition video monitoring helps authorities deal with situations such as pickpocketing, traffic accidents, terrorism, disorderly behavior of passengers and drivers, and more.



## HIGHLIGHTS

### ■ Real-time Tracking

Tracking in real time helps authorities inspect onboard situations.



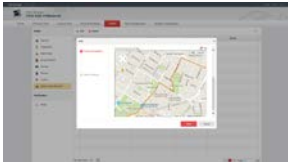
### ■ Instant Messaging

This function allows the security center to communicate directly with the vehicle.



### ■ Event Alarms

Smart features such as fence crossing alarms and deviation alarms can help authorities take effective action to handle security events.



### ■ Analytic Reporting

Reports on vehicle mileage, traffic, and timing provide intelligence that helps authorities make smart decisions to enhance revenue.



### ■ Routine Playback

This tool enables authorities to evaluate each vehicle's efficiency.



Special heating module and defog for outer-vehicle cameras



- High-reliability storage with die-cast aluminum design
  - Fully enclosed with dual-protected HDD and patented aviation airbag
  - Reinforced camera materials parts with silicone pad for shock absorption
  - Support multiple specialized connectors for vehicles or trail transport.
- \* Customization may required.



Dual-card design and zero channel combine to optimize wireless transmission



- Wide range isolated power supply to adapt sudden power voltage change;
- Support low battery voltage detection;
- Using super capacitor to ensure normal shutdown;
- Overvoltage protection against shocks (pulse filtering)



# Sea Point Highway, Cape Town, South Africa

## PROJECT BACKGROUND

Sea Point is one of Cape Town's most affluent and highly developed suburbs. The area's coastal location and general level of affluence make it very popular with city residents. However, not long ago, visiting the area was considered much less desirable, even dangerous. Adding to South Africa's high crime rates, absentee landlords had neglected many of the apartment buildings, leaving them in poor physical condition. The result was a very high crime rate, much of which was attributed to criminals in vehicles.



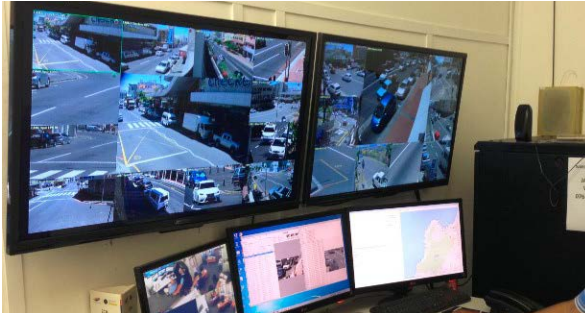
## CHALLENGES

The aim was to identify and track every individual vehicle entering or leaving the area and to co-ordinate law enforcement activity to combat crime. With an average of over 300,000 vehicle movements per hour, the sheer intensity of traffic meant a considerable technical difficulty for system designers.

Other challenges on this project were the changes in lighting conditions from day to night, the speed of the passing traffic, and the reliability of the particular surveillance equipment employed. Therefore, the critical features for cameras were build quality, reliability, weather protection, image quality, and true day-and-night visual capability.

## HIKVISION PRODUCTS ADOPTED

Smart day-night Box Camera and Video Management Software



## SOLUTION

Hikvision Smart IP cameras were selected, with each camera dedicated to monitoring one lane of traffic. This camera model provides unparalleled image quality under all lighting conditions. The superb image quality combined with the Smart Focus capability which allows SMART cameras to automatically adjust the image sensor to guarantee optimal focus without user intervention supplied, accurate renderings of vehicle license plates regardless of their speed.

## CUSTOMER TESTIMONIAL

"Crime in the area has dropped dramatically! Early indications are that there has been a 65% decrease in recorded crime within the Sea Point suburb. Another immediate result of the success of the Sea Point installation is the award of a large contract from City of Cape Town Metro, which involved a change from the originally specified camera manufacturer to Hikvision Smart cameras."

- Weison Chiang, AAC Distribution Sdn Bhd







# Shenzhen Bao'an International Airport, China

## PROJECT BACKGROUND

Shenzhen is located in the delta of China's Pearl River. Bordering Hong Kong to the south, it was established as China's first Special Economic Zone (SEZ) in 1979 and remains one of the most successful. The majority of domestic and international visitors pass through Shenzhen Bao'an International Airport, located approximately 32 km northwest of Shenzhen city centre and home to several airline companies. The airport was opened in 1991 and has undergone a major expansion program. The new, five million square foot third terminal was opened in November 2013 and replaces both older terminal buildings.

## CHALLENGES

The biggest challenge was the third terminal's sheer scale, including every corner of the terminal, such as the administrative offices, five-star hotels, shopping malls and parking areas. Another major obstacle for the engineering team was the Airport's wish to complete the project without using IR cameras while still providing the security teams with surveillance capabilities in all light conditions.

## HIKVISION PRODUCTS ADOPTED

Hikvision indoor vari-focal dome cameras, high-definition box cameras, HD speed domes, iVMS-5000 video management software through a web of video encoders and video decoders.



## SOLUTION

Within the terminal, including the check-in and departure areas, shopping malls and hotels, elevators, Hikvision super-low illumination cameras were deployed to secure the sites featuring Smart IR, and true day /night function, offering superior image quality 24/7 whilst remaining unobtrusive. Hikvision HD speed domes were also deployed for wide-area monitoring from any distance. All Hikvision cameras were linked to a Hikvision Video Server running iVMS-5000 video management software through a web of 129 video encoders and 37 video decoders.

## CUSTOMER TESTIMONIAL

"The analogue video surveillance system installed in Terminal 3 is the most successful analogue system we have ever implemented, whether you look at individual elements, such as codec technology, or the overall system performance. Above all, Shenzhen Airport's own project leaders are also very satisfied with both the implementation of this project and the final performance of the system."

- Lin, Engineer at Sancom Electronic Technology





# 100 School buses, Dubai-Sharjah-Ajman's National Charity School

## PROJECT BACKGROUND

The challenge of getting students to and from school safely is a worldwide phenomenon. Situated in the metropolitan area of Dubai-Sharjah-Ajman, the National Charity School primarily educates economically disadvantaged pupils whose families are unable to afford private education. Students come from a geographically expansive area, giving rise to transport problems. The school has invested in extra security for its fleet of 100 buses to enhance the safety of its pupils.

## CHALLENGES

The primary requirement was that each of the 60 large buses, including double-decker buses, had to be equipped with sufficient CCTV cameras to ensure that all access doors and seating areas were monitored.

All of the buses were to be fitted with external cameras, together with a monitor visible to the driver, for safer maneuvering and reversing. And, naturally, all of the selected equipment had to be robust enough to cope with the harsh desert environment.

There was also one other major challenge: in the short span of just 2 months, single bus had to be surveyed for camera locations and all the equipment ordered and installed.

## HIKVISION PRODUCTS ADOPTED

Hikvision IR Dome Cameras, Mobile DVRs and LCD monitors



## SOLUTION

Of the 240 bus cameras, 100 were matched to LCD monitors for external viewing applications and traveling in reverse. The remaining 140 cameras were positioned to meet the requirement to monitor all seats and doors. At the core of the mobile CCTV surveillance system is Hikvision's DS-8104HMF1-T Mobile DVR, providing redundant power for consistent operation. Additionally, its capabilities include anti-vibration, heat dissipation, and more.

## CUSTOMER TESTIMONIAL

"The new CCTV systems have proven an immediate success. Hikvision responded rapidly to our requests for information and in equipment delivery. Importantly, all the equipment we selected for this project has stood up really well to the harsh environmental challenges of vibration, dust and changing temperatures - and children!"





# MORE SMART TRANSPORTATION SUCCESS STORIES



01 Frankfurt's light railway station

02 Brazil's BRT MOVE bus station

03 Shanghai Magnetic Levitation Train



04 Frankfurt's light railway station

06 Nuremberg Railway Station, Germany

05 Brazil's BRT MOVE bus station

07 Supervia Stations, Brazil

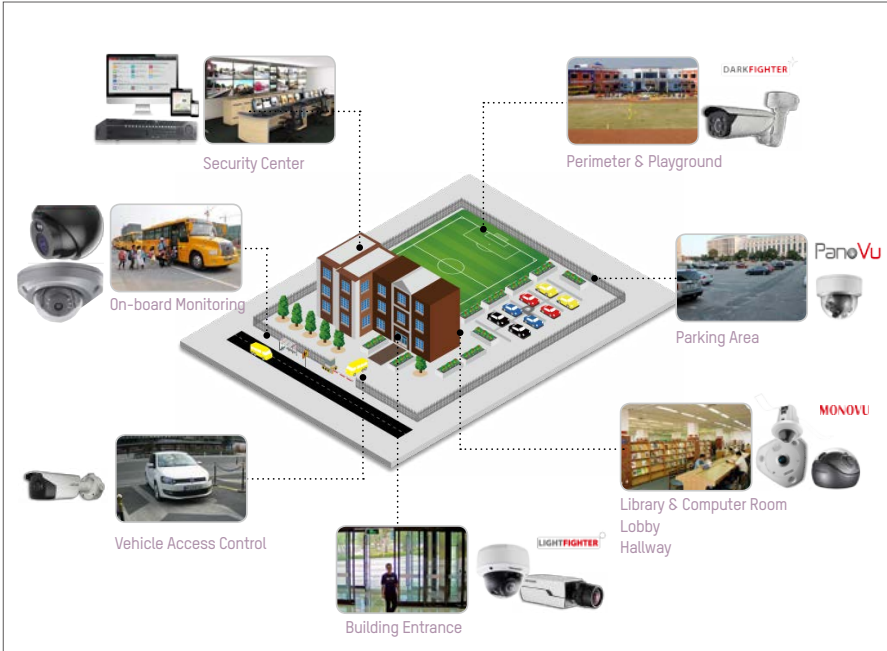








Hikvision's Smart Education Solution secures educational facilities with its advanced technology, powerful cameras, and critical recording devices. In protecting these places of learning, development, and exploration, campus security personnel worldwide will find this surveillance solution from Hikvision to be an absolutely essential asset.



## HIGHLIGHTS

### ■ Covert Cameras

The Hikvision 2E Series Recessed-mount IP Camera features an ultra-compact design to blend in with your educational environment – making this camera the ideal solution for any institution. This camera model, with its adjustable electrical plug, is easy to install, fits any space, and doesn't require tools.



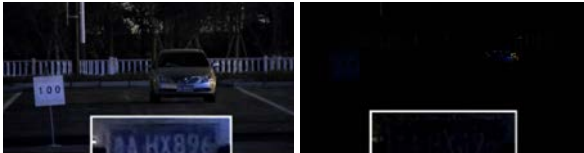
Easy Installation



Multiple colors

### ■ DarkFighter Cameras

School playground or perimeter areas are difficult to monitor from every angle and vulnerable to criminal activity. Hikvision's full range of DarkFighter cameras enables law-enforcement personnel to see clearly what goes on in these locations.





# A Local Public School District in the United States of America

## PROJECT BACKGROUND

Schools are increasingly turning to video surveillance as a way to promote safety and protect their students, faculty, and physical assets. Installing a new surveillance system, or upgrading an aging one, is a daunting task for any large school district. Ensuring safety within the district extends far beyond taking care of students - there are more than 200 facilities within the district's purview. There are also financial considerations. The organization needed an affordable surveillance system that still delivered the quality and high resolution necessary to have robust coverage of its facilities.

## CHALLENGES

Many of its schools already have surveillance systems, but they are dated and need to be replaced. Meanwhile, about one-fifth of the district's facilities have no coverage at all. In the past, old cameras and DVRs were often left unattended, which made footage retrieval difficult because not all of the equipment was well maintained. To help manage costs, the school district wanted to maximize use of its existing infrastructure. But district officials also wanted the ability to monitor activity in high definition, and its police department needed quick access to footage should an incident occur.

## HIKVISION PRODUCTS ADOPTED

Turbo HD 1080P PTZ outdoor IR camera (DS-2AE7230TI-A)

Turbo HD 1080P outdoor vandal proof IR dome camera (DS-2CE56D5TAVPIR3)

Turbo HD 1080P indoor vari-focal IR camera (DS-2CE56D1T-AVFIIR)

TurboHD DVR (DS-7316HQHI-SH)



## SOLUTION

The district addressed its needs by installing Hikvision Turbo HD surveillance system at one of its high schools. If successful, similar surveillance systems would be rolled out across the district. The TurboHD line of products has a foundation in HDTV technology, which retains the simplicity of analog systems while offering HD video output. Specifically, this technology supports latency-free 1080p HD over up to 1,500 feet (500 meters) of coaxial cable and offers seamless compatibility with traditional standard-definition cameras, HD-TVI-compatible cameras and DVRs, and Hikvision IP cameras. The first complete installation showcases a mix of standard-definition analog and HD analog equipment working in concert to protect staff and students alike.

## CUSTOMER TESTIMONIAL

"The cameras are cost-effective and better quality than what was being used before. No extra cost to the district — we can use that money on books," the district representative said.





# MORE SMART EDUCATIONAL SOLUTION SUCCESS STORIES



01 Strand High School, South Africa

02 Prince of Wales International, Malaysia

03 University-of-Agriculture-Faisalabad, Pakistan



04 Uka Tarsadia University, India

05 Delhi University, India | 06 Kyoto University, Japan



SUCCESS STORIES

# CRITICAL INFRASTRUCTURE







Hikvision's Smart Critical Infrastructure Vertical Solution combines proven durability with advanced technology to create high-security systems. High-performance monitoring enables authorities to protect many essential areas such as water purification sources, power plants, petro-chemical refineries, ports, and telecommunications centers.



Ports



Border



Petro-chemical refineries



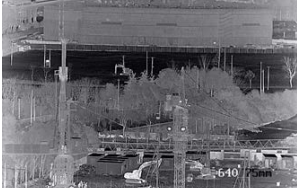
Power plants



## HIGHLIGHTS

### ■ Thermal Cameras

Hikvision Thermal Cameras provide multiple options for varying needs – long range detection of people, objects, and incidents – even in extreme, low-light environments.



Industrial



Perimeter



City



Temperature detection



# Sierra Grande Mining Facility, Argentina

## PROJECT BACKGROUND

Sierra Grande, Argentina, was a bustling town prospering from its rich natural iron ore deposits and mining capabilities. The mine was shut down by the government in the 1990s for several years, resulting in heavy job losses and decreased wealth in the area. With the government lifting their mining ban in, the mid-2000s, Sierra Grande has seen a sharp uptick, both for those who mine the ore as well as in the wealth of this entire region.

## CHALLENGES

Not only would Hikvision products be required to withstand the blazing heat and bitter cold, they would also be asked to do so both while outside in the bright sunlight and underground in nearly complete darkness. To further complicate the situation, Hikvision had to combine analog and digital components both indoors and out.

## HIKVISION PRODUCTS ADOPTED

A high-tech hybrid system of Hikvision's Network High Speed Dome, Auto-Tracking Speed Dome, Mini Dome, and IR Cameras, a standalone DVR, and an embedded NVR.



## SOLUTION

The Speed Domes and other Bullet cameras were installed to provide general surveillance of mining facility; Hikvision's Digital Video Server was used to convert the perimeter cameras' analog signals to the digital IP network wirelessly; and everything together provided both high efficiency and excellent cost effectiveness.

## CUSTOMER TESTIMONIAL

"It came down to two main factors: technology and durability. Both of these aspects proved that not only would Hikvision products be up to the task from a technology standpoint, but they would be able to withstand any weather this unforgiving desert could throw at them."

- Christian Uriel Solano, President of Security One Argentina  
(Hikvision distributor)





# Dun Laoghaire Harbour, Dublin

## PROJECT BACKGROUND

Located 7.5 miles (12 km) south of Dublin's City Center, Dún Laoghaire is widely recognized as one of the finest man-made harbors in the world. Its major surveillance problem stemmed from an existing analog CCTV infrastructure that only provided a view of an increasingly marginal resource - the ferry terminal - leaving surveillance of newer, more vital activities inadequate. Retaining the existing analog CCTV was required if at all possible, while extending the system's reach to the entire 247-acre (100- hectare) site.



## CHALLENGES

The focus of the CCTV surveillance system had to encompass the entire harbor complex. The land-side of the complex is increasingly busy and crowded with a large number of newer tourist hotspots and commercial venues, and the port is busy with watercraft of various.

Dún Laoghaire Harbor is also prone to extremely variable weather conditions, including frequent high winds, severe rain, and dense fog. Visibility can go from very good to very bad in minutes; this means any new CCTV system permitted to concentrate its surveillance on the exposed harbor walls and marina complex should be capable of coping with the worst of these environmental extremes while continuing to deliver clear images.

## HIKVISION PRODUCTS ADOPTED

Hikvision Smart IP cameras with Smart Defog and Smart IR features, as well as hybrid DVRs.



## SOLUTION

The new system retained all the existing coax cable that was laid within the harbor. It also concentrated existing analog cameras on the ferry terminal and its immediate surroundings. All newly installed cameras feature Hikvision's SMART imaging and detection, most prominently Smart Defog and Smart IR features; these technologies overcome problems that burdened the old CCTV system when the harbor is beset by unpredictable weather.

## CUSTOMER TESTIMONIAL

"The Hikvision system specified has exceeded our initial expectations. We use the system 24 hours a day to monitor the inner harbor area, consisting of car parks, walkways, buildings, busy junctions and ship berthing areas. We have been able to provide An Garda Síochána (police force) with evidence for a number of incidents that have occurred since the installation."

- Tim Ryan, Dun Laoghaire



# MORE CRITICAL INFRASTRUCTURE SUCCESS STORIES



01 Solar plant, Argentina

02 Rio de Janeiro Prison



03 Furnas Central Electric SA in Brazil

04 Libya Oil, Cameroon

05 Puma Energy Facility, Tanzania









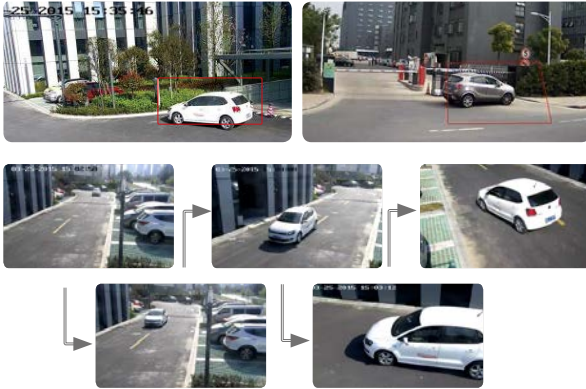
Hikvision's Smart Hotel Solution provides around-the-clock protection with industry-leading, low-light technology, automated vehicle access control via Hikvision's ANPR module, and automatic event alerts with Hikvision's Smart detection.



## HIGHLIGHTS

### ■ Intrusion Detection

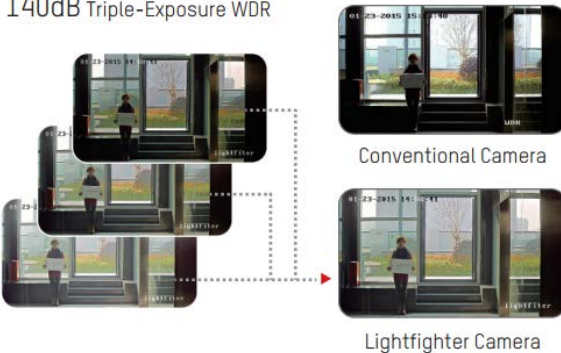
Hikvision HD offerings include full HD 1080p video with an outstanding frame rate of 60 fps, as well as Smart detection technology including: line crossing detection, intrusion detection, region entry/leaving, etc. These tools can help keep your perimeter secure.



### ■ LightFighter Cameras

Hikvision Indoor IR Dome Camera camera features an industry-leading 140dB wide dynamic range, triple exposure technology, and up to 30 meters (100 feet) of IR vision to provide a crystal-clear viewing.

#### 140dB Triple-Exposure WDR





# Sofitel Hotel, France

## PROJECT BACKGROUND

The Sofitel Paris Arc de Triomphe is a hotel located next to the Arc de Triomphe and Place de l'Etoile – all a mere 15-minute walk from the famed Avenue des Champs-Élysées. When both domestic and international travelers arrive in Paris, they expect luxury and privacy and both of those surrounded in a quiet blanket of unobtrusive security.

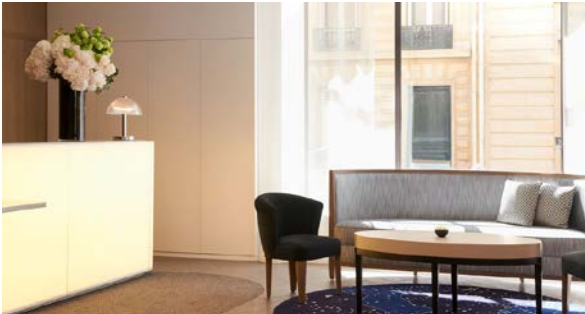


## CHALLENGES

The Sofitel Paris Arc de Triomphe required something special – high quality image resolution for a variety of external and internal lighting environments, and all within a discreet design. Also, since the hotel's main hallways, emergency exits, and interior corridors leading to guests' rooms should be surveilled, the CCTV system must both overcome and thrive in a variety of challenging environments.

## HIKVISION PRODUCTS ADOPTED

Hikvision Vandal-proof Network Dome Camera



## SOLUTION

Hikvision's vandal-proof network dome cameras were selected with their bevy of both subtle and substantial benefits. This well-suited Hikvision camera model was installed in the hotel's main hallways, emergency exits, and interior corridors leading to guests' rooms. It provides high resolution images to track individuals, and its vandal-proof feature also soundly deters any potential threat.

## CUSTOMER TESTIMONIAL

"Often, solutions of this nature would be forced to utilize a variety of cameras and different camera manufacturers. Fortunately for both NOVADIS and the Sofitel Paris Arc deTriomphe, Hikvision manufactures one versatile model."

- Nicolas Jdanoff, NOVADIS



# MORE SMART HOTEL SUCCESS STORIES



01 Grosvenor House, Dubai

02 Hollywood Hotel, USA

03 Al Wadi Hotel, Oman



03 Best Western Plus Sunset Plaza Hotel, CA, USA

05 Hotel Intercontinental Doha, West Bay, Qatar

04 Al Falaj Hotel Muscat

06 Oman Ruwi Hotel





SUCCESS STORIES

**BANKING**







MINK

Hikvision Smart Banking Surveillance Solution helps you conduct effective surveillance of bank assets, manage the security of your clients and personnel, protect restricted areas, and secure ATM areas with unwavering reliability.



## HIGHLIGHTS

### ■ Transaction Data Overlay

Hikvision provides a complete solution for ATM machines and its cabin area's safety.

- **ATM Cameras:**

HD video, discreet pinhole design, dual lens for different direction viewings.

- **ATM NVR:**

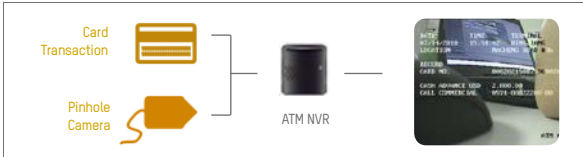
Dedicated form factor, supports transaction information overlay.

- **Cabin Camera:**

Only one wide angle camera covers all the in-cabin area.

*\*Note: Transaction data overlay with video for better customer dispute resolution and enhanced transaction safety*





*\* The integration protocols may vary based on exact ATM machine manufacturers and ATM models, a customization process may be required. Please contact a Hikvision local technical support team for more information.*

## ■ Dual-lens Teller Camera

High volumes of financial transactions each day – from signing documents to approving loans – may leave institutions vulnerable to customer misunderstandings or disputes.

### Monovu Camera:

Hikvision's Monovu teller camera is specifically designed for applications where high definition and bilateral close-up imaging are required of individuals during financial transactions.

### MODE 1



### MODE 2 (PiP)



Modern-classic Design



# VakifBank



## VakifBank, Turkey

### PROJECT BACKGROUND

VakifBank is the seventh largest bank in Turkey in terms of asset. VakifBank has been efficiently reaching out to its corporate and individual customers through its Internet and telephone banking services. As of September 30, 2015, VakifBank has taken a leading role in the financing of domestic and foreign trade with 912 branches, 3,446 ATMs and 163,893 units of POS that constitute its alternative distribution channels. domestic and foreign trade through 912 branches, 3,446 ATMs and 163,893 u points of sale, to constitute its alternative distribution channels.



## CHALLENGES

VakifBank's video surveillance system needs to centrally secure and manage the 610 branch offices throughout Turkey, including 3700 channels of video footage, real-time video preview, video retrieval, pan-tilt-zoom control, access and transfer of video information, and more.

## HIKVISION PRODUCTS ADOPTED

3700 channels of Hikvision analog cameras, DVR products, and iVMS-5200 Professional software



## SOLUTION

The video surveillance system for VakifBank is designed with distributed deployment that is local storage with centralized management. This system fully utilizes Hikvision's DVRs to achieve ample local-storage in branch offices, while the iVMS-5200 Professional video management platform was applied to remotely manage all of the video information from branch offices.

## CUSTOMER TESTIMONIAL

- Centralized management successfully reduces the labor cost as everything can be remotely managed in a single control center.
- The Hikvision software platform periodically audits the whole system to ensure consistent system reliability.
- When there is an alarm, the administrator can immediately locate the incident and react as needed, which greatly improves system efficiency.



# MORE SMART BANKING SUCCESS STORIES



01 Ziraat Bank in Turkey | 02 State bank of India Morocco BMCE



03 Morocco BMCE bank headquarters    04 Bank of India





## INDUSTRIAL & COMMERCIAL

SUCCESS STORIES





Commercial assets are vulnerable to theft and vandalism. Hikvision offers a wide range of effective and reliable solutions for the private sector so that the focus can remain on the business, not security.



### ■ PanoVu Camera

Large parking lots require vigilant management to ensure the flow of traffic and HD footage and to resolve disputes when accidents happen. Hikvision PanoVu camera provides Smart features to keep your parking areas operating efficiently and your visitors pleased.



Four rotated images in 1920 x 1080 resolution



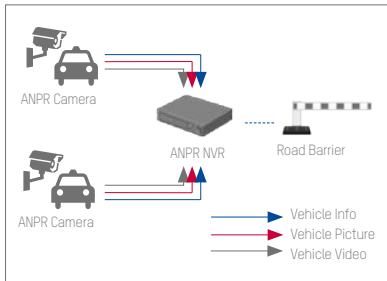
Stitching to one panoramic image in (4096 x 1800) resolution

## HIGHLIGHTS

### ■ Automatic Number Plate Recognition

Hikvision HD offerings include full HD 1080p video with an outstanding frame rate of 60 fps, as well as Smart detection technology including: line crossing detection, intrusion detection, region enter/leaving, and more. These tools can help keep your perimeter secure.

#### Recommendation 1



##### ANPR Camera

- Automatic number plate recognition
- Uploads vehicle's plate information and vehicle's picture to back-end device

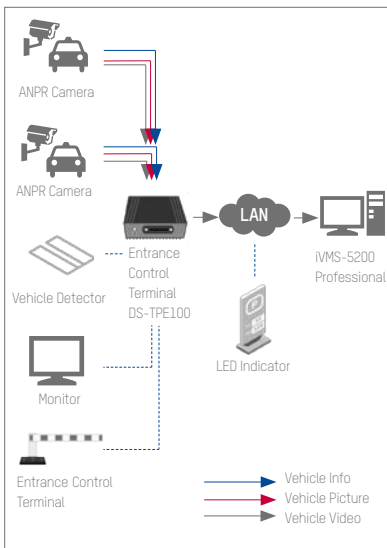
##### ANPR NVR

- Vehicle's number plate & vehicle picture storage
- Vehicle's passing-through video clip storage
- Black/white list management, alarm notification (supports up to 512 plate numbers)
- Simple road barrier control via I/O interface, no manual correction, no manual barrier control

##### Advantages

Easy-to-use, a true life system and simple to deploy. Ideal for a mini-sized entrance control systems.

#### Recommendation 2



##### ANPR Camera

- Automatic number plate recognition
- Upload vehicle's plate information and vehicle's picture to back-end device

##### Entrance Control Terminal

##### DS-TPE100 (Built-in iVMS-5200P Parking Client& PES server)

- Vehicle's number plate & vehicle picture storage
- Vehicle's passing-through video clip storage
- Black/white list management, alarm notification (support up to 5000 plate numbers)
- Special parking alarm, including overtime stay, list expiration check, unauthorized period access etc.
- Road barrier control, supports error correction, auto/manual barrier control, vehicle auto-matching etc.
- Simple road barrier control via I/O interface, number plate manual correction, number plate manual barrier control
- Available parking lots counting, support data output to 3rd party LED indicators
- Supports data analysis, including vehicle traffic flow report, average parking time report etc.

##### CMS Server iVMS-5200 Professional

- Multi-sites parking data collection & storage
- Multi-sites parking data analysis & report output

##### Advantages

A comprehensive, dedicated entrance control terminal with rich interfaces to connect external devices, ideal for a mid-to-large sized location with video surveillance, management, reporting and multi-site deployment. Customization support meets more business requirements.



# Centaurus Shopping Mall, Pakistan

## PROJECT BACKGROUND

Centaurus is a mixed use real estate development project designed by British architectural firm WS Atkins. The three 41-storey buildings host offices, residential apartments, and a 5-star hotel, with the luxury Centaurus mega mall security and surveillance system situated between and connecting the towers. As a major shopping hub, the Centaurus mall needs to protect customers and provide a safe and secure shopping environment.



## CHALLENGES

The Centaurus security team was facing issues like garbage being thrown in stairways and emergency exits. More seriously, security staff were regularly receiving reports of delete commal, shoplifters and pickpockets hiding in stairways to avoid detection. The new system had to monitor in real-time the key entry and exit points, the interior of the mall, and its emergency access points, as well as providing ongoing alarm monitoring.

## HIKVISION PRODUCTS ADOPTED

Hundreds of Hikvision Easy IP Cameras, 64-channel, high-end NVRs and iVMS-5200 Professional Software



## SOLUTION

The solution devised included 400 Hikvision DS-2CD2032-I 3MP Infrared IP Bullet Cameras and 80 DS-2CD2432F-IW 3MP IR Cube Network Cameras, which send video back to eight 64-channel DS-9664NI-ST high-end NVRs. The whole system is managed by Hikvision's iVMS-5200 Professional Video Management Software. The iVMS-5200 provides a smart alarm handling mechanism which helps operators quickly locate and identify alarm incidents.

## CUSTOMER TESTIMONIAL

"The system allows the entire mall to be monitored from the control room, where operators can proactively identify security risks. They are also able to ensure that emergency gates providing important access to the mall and skyscrapers are unobstructed and clear for emergency vehicles."

- Khuram Chohan



# MORE SMART INDUSTRIAL AND COMMERCIAL SUCCESS STORIES



01 Tan Hiep Phat Beverage Group, Vietnam

03 Jablotron Alarms, Czech

02 Military Command of the East in Brazil

04 Rotonda, Slovenia



05 NIIT Technologies, India | 07 Gulf and Shell gasoline stations in US

06 Total petrol station | 08 Shell gasoline stations in Oman



Distributed by



## **HIKVISION**

### **Headquarters**

No.555 Qianmo Road, Binjiang District,  
Hangzhou 310051, China  
T +86-571-8907-5998  
overseasbusiness@hikvision.com

**Hikvision USA**  
T +1-909-895-0400  
sales.usa@hikvision.com

**Hikvision Italy**  
T +39-0438-6902  
info.it@hikvision.com

**Hikvision Singapore**  
T +65-6684-4716  
sg@hikvision.com

**Hikvision Africa**  
Tel: +27110 0351172  
sale.africa@hikvision.com

**Hikvision Europe**  
T +31-23-55-62-770  
info.eu@hikvision.com

**Hikvision France**  
T +33(0)1-65-330-450  
info.fr@hikvision.com

**Hikvision Oceania**  
T +61-2-8599-4233  
salesau@hikvision.com

**Hikvision Hong Kong**  
T +852-2151-1761

**Hikvision Middle East**  
T +971-4-8816086  
salesme@hikvision.com

**Hikvision Spain**  
T +34-91-737-16-55  
info.es@hikvision.com

**Hikvision Canada**  
T +1-909-895-0400  
sales.usa@hikvision.com

**Hikvision Russia**  
T +7-465-669-67-99  
salesru@hikvision.com

**Hikvision Poland**  
T +48-22-460-01-50  
poland@hikvision.com

**Hikvision Korea**  
T +82-31-731-8841  
sales.korea@hikvision.com

**Hikvision India**  
T +91-22-28469900  
sales@pramahikvision.com

**Hikvision UK**  
T +44-1628-9021-4  
support\_uk@hikvision.com

**Hikvision Brazil**  
T +55 11 3318-0050  
Latam.support@hikvision.com